

# Cutting a Vinyl Mask By Hand

with a Vinyl Mask Kit  
from AngelGilding.com

Yes, you can mirror over a vinyl mask to create a mirrored design on glass. You can also use a vinyl mask for etching glass. You don't need to buy an expensive plotter or computer program to run it. These simple instructions tell you how to apply and cut the mask by hand.

**Reversing the Image:** The trick to creating a second surface mirrored design on glass is to reverse the image before you cut the mask. If you want the design to appear the right way around from the front of the glass, it has to be the opposite way around on the back of the glass. In other words, you have to create a mirror image of the design. These instructions offer a simple way to create the design as you want it to be and then reverse it before you cut the mask.

## You can use our vinyl mask for:

- Creating a mirrored design on glass – see our illustrated instructions below
- Diamond etching – see notes below
- Sandblasting– see notes below
- Glue chipping– see notes below
- Acid etching – see notes below

## This Kit Contains:

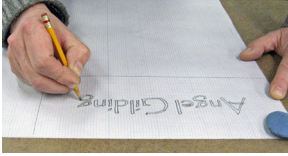
- White vinyl sandblasting mask – 24" x 36" x 4 mil (6 sq ft)
- Graph printed tracing paper – 24" x 36" (6 sq ft)
- Reusable carbon paper – 23.5" x 34" (5.5 sq ft)
- 1 Squeegee to apply the vinyl – 3" x 5"
- 1 Craft knife to cut the vinyl
- 5 Replacement blades for the craft knife

## You supply:

1. The design
2. The glass
3. Scissors
4. Tape
5. Lead pencil and eraser to draw the design
6. Colored pencil to trace the design

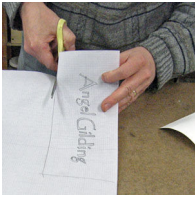
## Cutting a Vinyl Mask

### Step 1: Draw Your Design



Place the glass on the tracing paper and trace the edges so you can design your work to fit your glass area. Our translucent graph tracing paper is “eraser friendly” so you can you draw, erase and refine your design until it is perfect.

### Step 2: Cut The Vinyl And The Tracing Paper



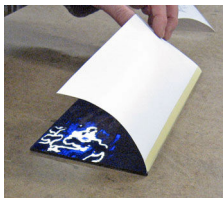
Use scissors to cut the vinyl and the final tracing paper design to fit the glass exactly. Do NOT remove the backing paper from the vinyl.

### Step 3: Clean The Glass



Clean the glass very thoroughly before you apply the vinyl. See our [How To Silver Sheet Glass](#) instructions for details. Dry the glass with hot air or a clean paper towel.

### Step 4: Align The Vinyl To The Glass



Place the vinyl – vinyl side up – on the glass and align the edges. Tape one edge firmly to the glass to create a hinge. The hinge keeps the vinyl in place when you remove the backing paper.

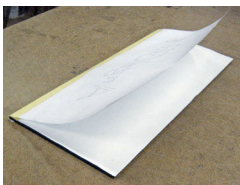
### Step 5: Apply The Vinyl To The Glass



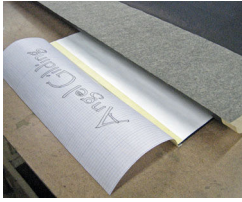
The idea is to stick the vinyl to the glass without trapping any air bubbles under it.

Lift the vinyl on the hinge side and begin to peel off the backing paper. Place the squeegee in the center and run it down the vinyl removing the release paper as you go. Then run the squeegee from the center to the sides of the glass pushing any air bubbles out to the edge.

### Step 6: Turn The Design Over And Hinge It To The Glass



Place your tracing paper design **DRAWING SIDE DOWN** on the vinyl and center it on the glass. Use tape to align and hinge it to the glass as you did with the vinyl.



### Step 7: Place Carbon Paper Under The Design

Fold back the tracing paper. Place the carbon paper – dark side down, light side up – between the tracing paper and the vinyl. Don't cut the carbon paper since you can use it again many times. It doesn't matter if the carbon paper shifts while you are tracing the design as long as the design does not shift.



### Step 8: Trace The Design Onto The Vinyl

Looking through the tracing paper, use a red pencil to trace your design through the carbon paper onto the vinyl. If you use a red pencil, you can easily see if you have missed transferring any design elements to the vinyl.



### Step 9: Mark The Pieces To Be Removed

Mark all the pieces you want to remove with a "x" *before* you lift the tracing paper. It is easy to get confused and remove the wrong piece later. It is difficult to replace an area of cut vinyl if you lift the wrong one.



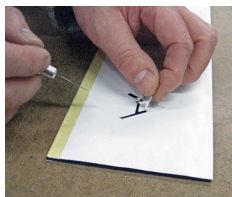
### Step 10: Check The Design And Remove The Papers

Before you undo the tape hinge, lift the carbon paper and tracing paper. Check to see that you have transferred all design elements to the glass and marked all the pieces you want to remove with an "x". If everything is fine, unstick the hinge and remove the carbon and tracing papers.



### Step 11: Cut The Design

Use the craft knife and a *sharp new* knife blade to cut out your design. A rusty or bent blade could scratch the glass. A sharp new blade will not. Use a ruler to guide the knife when cutting straight lines.



### Step 12: "Weed" The Design

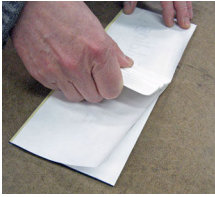
When you have cut your design into the vinyl, use the point of the knife to expose the areas you want to mirror.



### Step 13: Check Your Results

Turn the glass over and examine the glass from the front to be sure you have cut and removed all the areas you want to mirror.

### Step 14: Smooth The Cut Edges



Place the vinyl release paper over the cut vinyl and use the squeegee to smooth over the whole design. This will re-attach any corners or edges that might have lifted when you were “weeding”.

You can use the mask to mirror, etch, sandblast and/or glue chip the glass. See notes below.

---

## How to Mirror Over Vinyl

First learn how to mirror flat glass according to our instructions on “How To Silver Sheet Glass” at [http://angelgilding.com/media/pages/Sheet\\_Glass\\_Instructions.pdf](http://angelgilding.com/media/pages/Sheet_Glass_Instructions.pdf) The steps outlined below are extra steps you need to take when you are using a vinyl mask (whether cut by hand or by plotter) to create a mirror design on a clear background. Complete ALL steps in the mirroring process BEFORE you remove the vinyl mask.

---



### Step 1: Clean the Vinyl Covered Glass

Clean the vinyl covered glass gently and thoroughly with warm (not hot) water and a little of our glass cleaner. Hot water will lift the mask. Rinse the glass well with distilled water.



### Step 2: Don't Skimp On Chemicals

You will get more complete coverage inside the open areas if you let the mirroring spill over onto the vinyl. The timing is the same as regular mirroring.



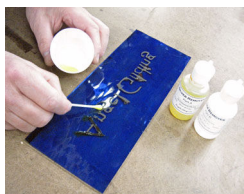
### Step 3: Mirror Seepage

Don't worry if some of the chemicals seep under the mask. You will remove the extra later.



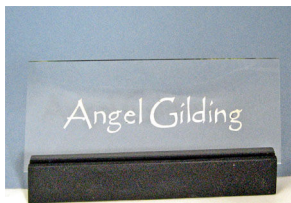
### Step 4: Paint the Mirror

Let the mirror (and the mask) dry completely before painting. Be sure to cover the edges of the mirrored areas with paint. Our mirror backing paints peel cleanly after they are dry.



### **Step 5: Remove Excess Mirror Deposits**

When the paint is quite dry, peel off the vinyl mask and remove the excess silver (gold, copper or galena) with a Q-Tip and the appropriate mirror remover.



### **Step 6: Admire Your Handiwork**

Clean the face of the glass and stand back to admire your handiwork. Once you know how to make a mirrored design you can see how easy it is to get stunning results.

---

## **Using the Same Mask for Multiple Techniques**

### **Chemically Etching Glass:**

You can use a hand cut vinyl mask to etch the glass before you mirror it. Please note that etching is **permanent**. When you cut the mask for etching you must be very careful that you **do not over cut the corners** or make any random cuts in the vinyl because the etching cream will etch anywhere it can reach.

### **Sandblasting Glass:**

You can use a hand cut vinyl mask to etch the glass before you sandblast it. Our 4 mil thick sandblasting vinyl holds up well to light and medium depth sandblasting. It may not hold up to deep carving.

To use the mask for mirroring, wash it gently but thoroughly with glass cleaner to remove all sandblasting residue. Galena and copper mirrors look wonderful on sandblasted glass. Silver and gold look a bit muddy on sandblasted glass and wonderful on acid etched glass. Acid etching creates smoother “bumps”.

### **Glue Chipping Glass:**

You can use one mask for sandblasting and glue chipping, but the glue can stretch and pull up the mask as it dries which destroys it. Once it is stretched out of line, you can't use it for mirroring.

### **Diamond Point Etching:**

A hand cut vinyl mask certainly helps you “color inside the lines” when you are etching the glass with a diamond point.